

 Grow the perfect cutting garden

# Boston magazine's

# HOME & GARDEN

Our ultimate guide to summer design



**ISLAND STYLE:**  
Homes on Nantucket and Martha's Vineyard

# *dream* kitchens

Winners of our Dream Kitchen Contest

(page 112)

[bostonmagazine.com](http://bostonmagazine.com)

SUMMER 2007 \$4.95  
DISPLAY UNTIL SEPTEMBER 25, 2007

7 2 >



0 74820 87374 8



# OVER THE

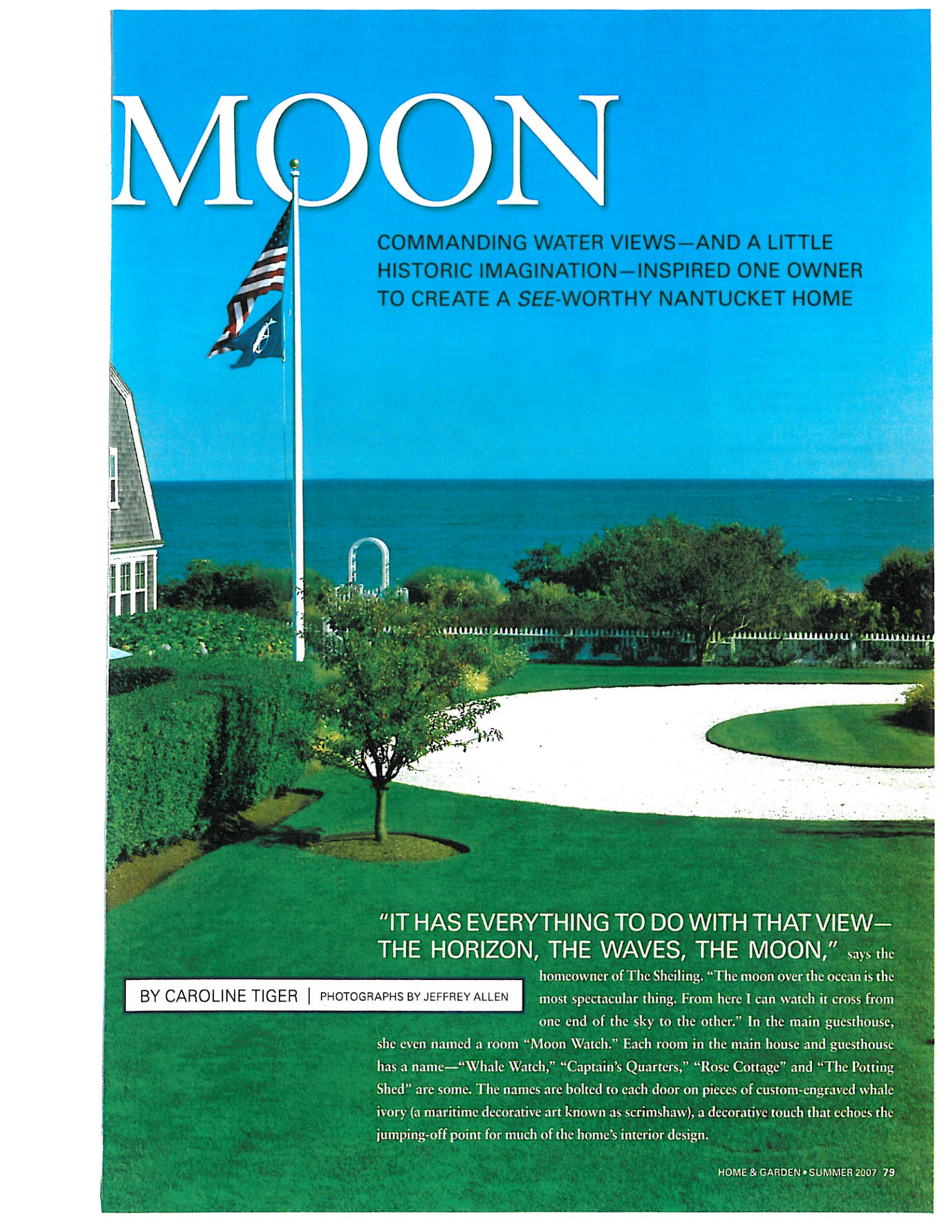


## OUT TO SEA

The view was the one thing that didn't need work. "Just sit me here with a lawn chair and I'm happy," says the homeowner.



# MOON



COMMANDING WATER VIEWS—AND A LITTLE HISTORIC IMAGINATION—INSPIRED ONE OWNER TO CREATE A *SEE-WORTHY* NANTUCKET HOME

**“IT HAS EVERYTHING TO DO WITH THAT VIEW—THE HORIZON, THE WAVES, THE MOON,”** says the

BY CAROLINE TIGER | PHOTOGRAPHS BY JEFFREY ALLEN

homeowner of The Sheiling. “The moon over the ocean is the most spectacular thing. From here I can watch it cross from one end of the sky to the other.” In the main guesthouse, she even named a room “Moon Watch.” Each room in the main house and guesthouse has a name—“Whale Watch,” “Captain’s Quarters,” “Rose Cottage” and “The Potting Shed” are some. The names are bolted to each door on pieces of custom-engraved whale ivory (a maritime decorative art known as scrimshaw), a decorative touch that echoes the jumping-off point for much of the home’s interior design.



## COLLECTOR'S ITEMS

The owner wanted the interior to reflect historic Nantucket without being limited to a nautical theme. Designer Debra Blair helped to set the stage around her client's collections, such as blue-and-white Chinese export porcelain, scrimshaw and whaling ephemera. The centerpiece in the great room is Captain George B. Chase's logbook (under glass), from the maiden voyage of the whaleship *Planter*, which sailed in the early 1800s.



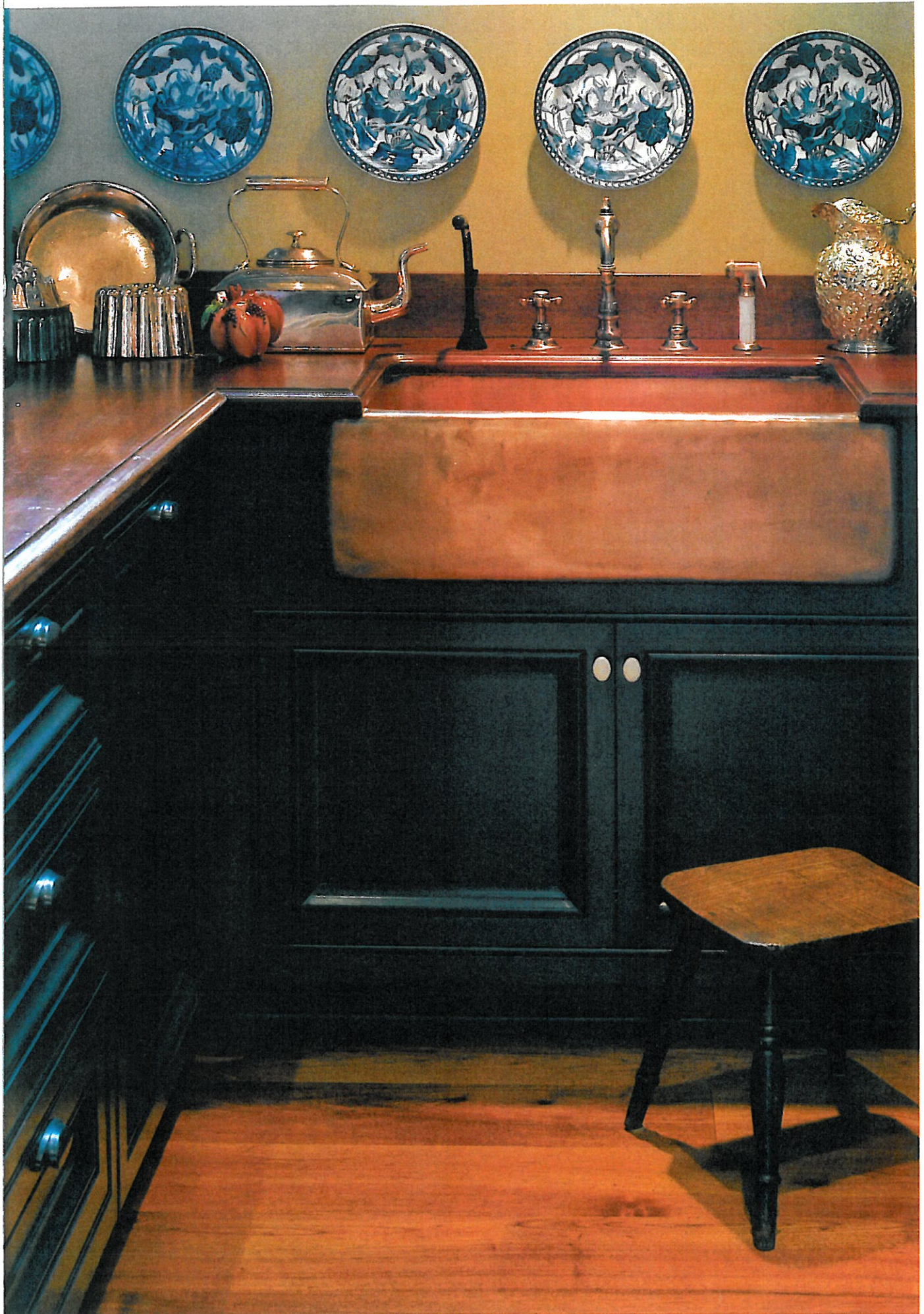




## IN THE NAVY

The dark, rich blue paint in the entryway complements the woolies (from Lynda Willauer Antiques) that ascend the staircase. Sailors made these wool-stitched nautical scenes during 19th-century sea voyages. A hooked runner was custom-made for the stairs.









## FINE DINING

A Waterworks copper sink in the butler's pantry, OPPOSITE, sparkles amid dark colors. Blue-and-white porcelain dots the stormy-seas design scheme in the dining room, ABOVE AND RIGHT.

"I always imagined that it was a sea captain's house," says the owner. She doesn't know when the original nameplate bearing the words "The Sheiling" was affixed to the front of her Nantucket home, but when she and her husband bought it in 2000, she was told that "sheiling" was Gaelic for "a haven of rest for seafaring people."

She soon discovered that wasn't entirely true—a sheiling is actually a hut built by shepherds who've taken their herds to graze the highlands for the summer—but either translation would make sense considering that rest, sheep-raising and seafaring all figure prominently in Nantucket's history. Some more detective work revealed that the house was built in 1880, about 30 years after the whaling industry bottomed out and around the same time that tourism had become a driving force of the island's economy. So it's most likely the home originated when some captain of industry, perhaps of Scotch descent, decided to build his summer home on a sought-after spot along Siasconset's south bluff.

## SHIPSHAPE

WHATEVER ITS PAST, WHEN THE COUPLE BOUGHT THE HOME ITS FOUNDATION WAS NIL, THE ROOF WAS STARTING TO SAG, AND, IN SOME SPOTS, THE







## LATE ADDITIONS

Renovation plans had been set when the owner acquired this corner cupboard, so the team made adjustments to accommodate the furnishing by building a wall around it. A breakfast room, OPPOSITE, is part of the addition. It's situated so the family can sit and enjoy an ocean view.



SHE SET OUT TO CREATE  
A REAL HOME, NOT JUST A  
SUMMER COTTAGE—  
A YEAR-ROUND SHEILING









## SWEET SLUMBER

The owner's son commands the "Captain's Quarters," with its mahogany berth beds, **BELOW**. Visitors quarters are in abundance—each room has its own name and decor. Those with ocean views are equipped with binoculars for spotting whales. In each guestroom, there's a journal on the bedside table with the beginnings of a story based on the name of the room on the first page. Guests are encouraged to pick up a pen and continue the tale.





## NATURAL BEAUTY

A gateway leads to a private beach. The aptly named Rose Cottage, **bottom**, was an original outbuilding that the owner had moved and turned into a guesthouse. The cottage-for-one is just big enough for a white wrought-iron twin. The floors and ceilings are whitewashed, and a toilet and sink are cleverly concealed behind bifold doors.



floor was sloping at a six-inch grade. “The house was in need of some TLC,” says Jennifer Riolo, an architect with Lyman Perry Architects, a firm with offices in Nantucket and Pennsylvania that has a long track record of restoring homes on the island.

One of the first objectives was insulation. The couple planned to use the home year-round—and eventually for retirement. They frequently host parties and weekend guests, so they wanted rooms suited for entertaining and also some intimate spaces for smaller affairs. Jeffrey Spoelker, the Lyman Perry principal in charge of the project, crafted a plan to lift the house and pour a concrete foundation with the help of Ron Winters, a general contractor and owner of Thirty Acre Wood in Nantucket. While the house was on stilts, they built a basement, increasing the living space by 2,000 square feet. *(continued on page 126)*





## ISLAND LIVING

Lyman Perry Architects designed the guesthouse, LEFT, in keeping with the Nantucket vernacular to complement the main house. A freshwater pool designed by Stephen Stimson Associates in Falmouth, BELOW, is a gathering place for family and friends, especially at the end of the day when the light is low.

